

SAFETY FOOTWEAR



& WORKWEAR

**Iron
Steel[®]**
SCANDINAVIA

Footwear Symbols



**ALUMINIUM
TOECAP**



**COMPOSITE
TOECAP**



**LIGHT
WEIGHT**



**OIL RESISTANT
OUTSOLE**



**HEAT
RESISTANT
OUTSOLE**



**BREATHABLE
MATERIAL**



**NON-METAL
ANTI-
PENETRATION**



ANTISTATIC



ESD



**WATER
RESISTANT
UPPER**



WATERPROOF



**COLD
INSULATION**



**HEEL ENERGY
ABSORPTION**



**PORON
CUSHIONING**



**SR SLIP
RESISTANCE
RATING**

Oslo

#201673 380g

**Super Light Weight
Ergonomic
Footbed**

Unique Boa Lacing-system

**Supportive
Heel-cap**

**Durable
Upper
Fabric**

**Light Weight
Sporty Injection
Phylon Midsole**

**Reinforced
Front-cap**

**Gravity® Bump Outer Sole
Flex-lines Facilitate Movement**

EUR 36 – 47

EN ISO 20347:2022 O1 E FO HRO WPA SR ESD

BOA® | FIT TO GO
FURTHER.™



Milano

#201489 520 g

Antistatic Removable
Cambrelle IP
Footbed including
Poron®

High Abrasion Resistant
Breathable Mesh

High
Rebound
Compound
Phylon
Midsole

Aluminium
Toe Cap

Non-metal
Anti-penetration

Dual Density
Light Weight Sole

EUR 37 - 47

EN ISO 20345:2011 S1P HRO SRC



Verona

#201606 564g

Antistatic Removable
Cambrelle IP
Footbed including
Poron®

High Abrasion Resistant
Breathable Mesh

High
Rebound
Compound
Phylon
Midsole

Aluminium
Toe Cap

Non-metal
Anti-penetration

Dual Density
Light Weight Sole

EUR 37 - 47

EN ISO 20345:2011 S1P HRO SRC

BOA®

FIT TO GO
FURTHER.™

poron^{xrd} extreme
impact
protector



Leeds

#201550 590 g



EUR 37 - 47

EN ISO 20345:2011 S1P HRO SRC

BOA®

FIT TO GO
FURTHER.™

poron^{xrd} extreme
impact
protector



Sheffield

#201579 620 g



EUR 37 – 47

EN ISO 20345:2011 S3 HRO SRC

BOA® | FIT TO GO FURTHER.™

poron^{xrd} extreme impact protection



Chicago

#201306 635g



EUR 37 – 47

EN ISO 20345:2011 S1P HRO SRC

BOA® | FIT TO GO FURTHER.™

poron^{xrd} extreme impact protector



Boston

#201614 604g

**Antistatic
Removable
Poron® XRD®
Footbed**

Breathable Comfortable Upper

**Non-metal
Anti-penetration**

**Lightweight
Sporty Injection
Phylon Midsole**

**Dual Density Outer Sole,
Flex-lines Facilitate Movement**

**Aluminium
Toe Cap**



EUR 37 – 47

EN ISO 20345:2011 S1P HRO SRC

BOA®

**FIT TO GO
FURTHER.™**

poron^{xrd} extreme
impact protector



Harlem

#201650 720 g



BOA®

**FIT TO GO
FURTHER.™**

poron^{xrd} extreme
impact protector



Wrexham

#201710 540 g

Super Light Weight Ergonomic Footbed

Durable Comfortable Upper

Non-metal Anti-penetration

Reinforced Rubber Front-cap

Light Weight Sporty Injection Phylon Midsole

Gravity® Bump Outer Sole Flex-lines Facilitate Movement

Aluminium Toe-cap

EUR 36 – 47

EN ISO 20345:2022 S1PL FO HRO SR ESD

BOA®

FIT TO GO FURTHER.™



Mersey 2

#211613 680g



EUR 37 – 47

EN ISO 20345:2022 S7L FO HRO SR ESD

BOA®

FIT TO GO FURTHER.™

HDry

poronXrd extreme impact protector



Orlando

#201830 670 g



EUR 36 – 47

EN ISO 20345:2022 S7L FO HRO SR ESD

BOA® | FIT TO GO FURTHER.™

HDry



Kasai

#201548 670 g



EUR 39 – 47

EN ISO 20345:2011 S3 HRO WR SRC

BOA®

**FIT TO GO
FURTHER.™**

HDry

poronXrd extreme
impact
protector



K2

#201475 740 g



EUR 37 – 47

EN ISO 20345:2011 S3 CI HRO WR SRC

BOA® | FIT TO GO FURTHER.™

HDry®

3M
Thinsulate
INSULATION

poron**xrd** | extreme impact protector



Technical Wool Socks #21010300



Comfortable and Durable, for Work and Leisure

- Anatomically customized to provide superior fit
- Wool provides unsurpassed protection for the feet
- The natural fibres in the material regulate body temperature
- Composition: 57% wool / 18% polyester / 25% nylon
- Packaging, size and weight: 2-pack / one size / 58 g per pair
- Colours: Black/orange, grey logo



Gravity-IP

#210102 44g



EUR 01(36-38), 02(39-41), 03(42-44), 04(45-47)

Injection Phylon (IP) and Poron®

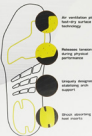
- Air ventilation plus fast-dry surface technology
- Releases tension during physical performance
- Uniquely designed stabilizing arch support
- Shock absorbing heel inserts

Iron Steel®
GRAVITY-IP INSOLE

The Gravity-IP insole comes with an anatomical fit that is built to support the heel, mid- and forefoot while at the same time ensuring shock and moisture relief.

The yellow Poron® Performance material allows the beneficial shock waves caused by strenuous work and activities. Poron® provides performance, greater long-lasting comfort and excellent compression resistance.

The Shock-IP Injection Phylon is a very light and flexible material that provides the combination of extra support and shock absorption plus energy is returned every step.



European Standards Footwear Classifications

| Function | European Standards EN ISO 20345 for safety footwear |
|-------------------------|--|
| Impact Resistance | Level of protection: 200 Joules |
| Compression Resistance | Level of protection: 15kN |
| Anti - penetration Sole | With symbol of "P" resist a penetration force of 1,100 Newtons (N) |

| Marked | Standard for EN ISO 20345:2022 | Marked | Standard for EN ISO 20347:2022 |
|--------|---|--------|--|
| SB | Basic requirements for safety footwear: - Standing 200 Joules on impact - Slip resistance of SRA, SRB or SRC standard | OB | In terms of comfort and wear resistance, a level of quality as defined by an agreed European Standard |
| S1 | As above SB standard, plus: - Closed seat region - Antistatic properties - Energy absorption of seat region - Resistance to fuel oil | O1 | As above OB standard, plus: - Closed heel area - Antistatic properties - Energy absorption of seat region |
| S1P | As above S1 standard, plus perforation resistance | O2 | As above O1 standard, plus: - Water-penetration and absorption resistance |
| S2 | As above S1 standard, plus: - Water penetration and absorption - Non cleated outsole | | |
| S3 | As above S2 standard, plus: - Penetration resistance - Cleated outsole | | |
| S7L | As above S3 standard, plus: - Non-metallic perforation resistant insert with resistance to 4.5 mm nails - Water resistant on whole footwear | | |

European Standards Footwear Classifications

(Cont.)

Slip resistance according to the EN ISO 20345:2011

The following markings show on which ground the footwear provides protection (how much friction):

| Marked | Lubricant | Test Area | Test Mode | Normative standards friction coefficient |
|--------|---|--------------------|-------------------|--|
| SRA | NaLS | Ceramic tile floor | Forward heel slip | $\geq 0,32$ |
| | | | Forward flat slip | $\geq 0,28$ |
| SRB | Glycerol | Steel floor | Forward heel slip | $\geq 0,18$ |
| | | | Forward flat slip | $\geq 0,13$ |
| SRC | Tested and conforms to both (SRA & SRB) specification tests | | | |

Slip resistance according to the EN ISO 20345:2022

Slip resistance is an important feature of safety footwear. It is considered mandatory and will therefore not carry a mark. There is an option for an additional slip test to be carried out, which will be marked with an SR symbol. The slip resistance test is carried out on a ceramic tile using different lubricants. The heel and forepart of the boot will be tested.

| Marking | Basic Requirement | | Additional Requirement SR | |
|-----------------|-------------------|-------------|---------------------------|-------------|
| Surface | Ceramic | | Ceramic | |
| Lubricant | NaLS | | Glycerine | |
| Position | Heel | Forepart | Heel | Forepart |
| Direction | Forward | Backward | Forward | Backward |
| Requirement COF | $\geq 0,31$ | $\geq 0,36$ | $\geq 0,19$ | $\geq 0,22$ |

COF = coefficient of friction

Please note that even if the footwear is marked with SRC or SR, the user must always pay attention to the condition on the ground as the responsibilities always stays with the user.

European Standards Footwear Classifications

(Cont.)

| Symbols | Function | Requirement |
|---------|--|---|
| A | Antistatic | Between 0.01 and 1000 M Ω |
| P | Penetration resistance metallic insert | At least 1,100 newtons of pressure, tested with 4.5 mm nail |
| PL/PS | Perforation resistance non-metallic insert | PL - With 1,100 newtons of pressure, tested with 4.5 mm nail PS - Average value of four tests must not be lower than 1,100 newtons, tested with 3.0 mm nail |
| C | Conductive footwear | < 0.1 M Ω |
| CI | Insulation against cold | In an environment of minus 17°C for 30 minutes, the insole surface temperature should not have declined by more than 10°C |
| AN | Ankle protection | The ankle areas shall be protected at least on the outer side of the footwear |
| E | Energy absorption | > 20J |
| HI | Insulation against heat | The environment is 150 °C for 30 minutes, the insole surface temperature should not rise above 22 °C |
| HRO | Resistance to hot contact up to 300°C | When exposed to high temperatures up to 300 °C of the surface, there should be no broken soles |
| WPA | Water penetration and water absorption resistant upper | Water penetration time > 30 min Water absorption after 20% \leq 30min Permeable volume \leq 3g / h Water vapor permeability \geq 0.8mg/cm2h |
| LG | Ladder grip | To offer better foothold on ladders, the outsole of a safety shoe must have a transverse profile with a height of at least 1.5 mm in the arch area |
| FO | Fuel oil resistance | The shoe sole's resistance to hydrocarbons (oils, petrol, etc.) |
| M | Metatarsal protection | The metatarsal protective device shall be such that, under impact, the resulting forces are distributed over the outsole, the toecap and as large a surface of the foot as possible |
| WR | Water resistance | Protection classes, S6 and S7, for waterproof footwear: S6 = the footwear meets the requirements of class S2 and is also waterproof (WR) S7 = the footwear meets the requirements of class S3 and is also waterproof (WR) |



European Standard High Visibility Clothing

Minimum area with visibility materials m²

| | Class 1 | Class 2 | Class 3 |
|----------------------|---------|---------|---------|
| Fluorescent material | 0,14 | 0,50 | 0,80 |
| Reflective material | 0,10 | 0,13 | 0,20 |

X => The number shown next to the graphic symbol indicates the class of the garment according to the table. You will find the certification class printed on the care label inside the product.

EN ISO 20471



EN ISO 20471:2013

- Safety and visibility are important parts of reducing accidents in the workplace. This standard specifies requirements and test methods for visibility clothing. The workwear must be CE-tested and certified by an accredited certification institute.
- The workwear is marked as EN ISO 20471:2013 and the fluorescent and reflective areas are divided into three different classes. The certification class of the garment is based on the area of visible materials and can be either class 1, 2 or 3. The certification class shall be marked within the workwear.
- If the maximum number of washes are not specified in the care instructions, the articles have been tested after five washes. The lifespan of the garment depends on i.e. use, care, and storage. Regular and proper care of the workwear provides best performance.
- The high visibility protective product shall not be covered by any other garment or equipment. And even if a high visibility garment is used, the user will not be visible in all conditions. If the workwear is dirty, its performance will be impaired. Follow the care instructions inside the high visibility workwear to maintain its properties.

Hi-vis T-shirt

#400100



XS – 4XL (00 - 07)

EN ISO 20471 Class 1

Very comfortable High-Visibility T-shirt with stretch. The fabric has UV protection, and the main part is in bamboo, which is pleasant to the skin, moisture-wicking and breathable, plus it helps to reduce unpleasant odours.

- Safety-class: EN ISO 20471 Class 1
- Colours: Black / Hi-vis Yellow
- Specifications: 55% Bamboo / 45% Polyester 180g, UV protection
- Reflective material: Two 5 cm reflective stripes around torso, one 5 cm reflective stripe around upper arm, reflective material on both shoulders



Hi-vis Sweatshirt

#400200



XS – 4XL (00 - 07)

EN ISO 20471 Class 1

Thick and solid Sweatshirt which warms on chilly days. The cotton fabric ventilates well and provides high comfort and good insulation whenever needed. It works just as well as an outer garment as an insulating layer.

- Safety-class: EN ISO 20471 Class 1
- Colours: Black / Hi-vis Yellow
- Specifications: 100% Cotton 320g black, 100% Polyester 300g Hi-vis yellow
- Reflective material: Two 5 cm transfer reflective stripes around torso and each arm, reflective material on both shoulders



Hi-vis Paclite Jacket #400300



XS – 4XL (00 - 07)

EN ISO 20471 Class 3

A very light, breathable and pack-friendly shell jacket that provides maximum visibility in combination with protection against wind. Certified as class 3 in all sizes. It works just as well in the workplace as during various outdoor activities.

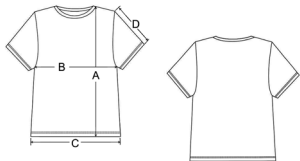
- Safety-class: EN ISO 20471 Class 3
- Colours: Hi-vis Yellow
- Specifications: 100% Polyester Ribstop, soft fleece inner-collar, YKK front-zip, two front pockets with zippers, one inner pocket with zip, drawstring at hem, ID card D-ring
- Reflective material: Two 6 cm transfer reflective stripes around torso and each arm, reflective material on both shoulders



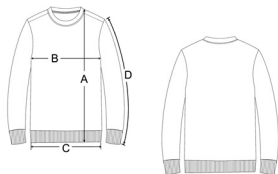


Size Charts - Unisex

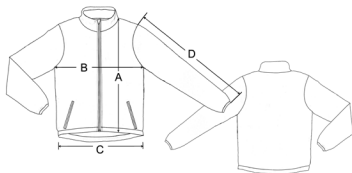
Workwear:



| T-SHIRT | XS | S | M | L | XL | 2XL | 3XL | 4XL |
|------------------|----|----|------|------|----|-----|------|------|
| A) Body length | 65 | 67 | 70 | 72 | 75 | 78 | 81 | 84 |
| B) 1/2 Chest | 43 | 47 | 51 | 55 | 59 | 63 | 67 | 71 |
| C) 1/2 Bottom | 43 | 47 | 51 | 55 | 59 | 63 | 67 | 71 |
| D) Sleeve length | 21 | 21 | 21.5 | 21.5 | 22 | 22 | 22.5 | 22.5 |



| SWEATSHIRT | XS | S | M | L | XL | 2XL | 3XL | 4XL |
|------------------|----|------|----|------|----|------|-----|------|
| A) Body length | 68 | 70 | 72 | 74 | 76 | 78 | 80 | 82 |
| B) 1/2 Chest | 47 | 51 | 55 | 58 | 62 | 66 | 70 | 74 |
| C) 1/2 Bottom | 42 | 45 | 48 | 52 | 56 | 59 | 62 | 65 |
| D) Sleeve length | 59 | 60.5 | 62 | 63.5 | 65 | 66.5 | 67 | 67.5 |



| JACKET | XS | S | M | L | XL | 2XL | 3XL | 4XL |
|------------------|------|------|------|------|------|------|------|------|
| A) Front length | 64.5 | 67 | 70.5 | 72 | 73.5 | 75 | 76.5 | 78.5 |
| B) 1/2 Chest | 49.5 | 52.5 | 55.5 | 58.5 | 61.5 | 64.5 | 67.5 | 70.5 |
| C) 1/2 Bottom | 49 | 52 | 55 | 58 | 61 | 64 | 67 | 70 |
| D) Sleeve length | 66 | 67 | 69 | 70 | 71 | 72 | 73 | 74 |

Footwear:

| DESCRIPTION | SIZE / MEASUREMENT (mm) | | | | | | | | | | | |
|-----------------------------------|-------------------------|-----|-----|-----|-----|-----|-----|-----|-----|-----|-----|-----|
| EUR size | 36 | 37 | 38 | 39 | 40 | 41 | 42 | 43 | 44 | 45 | 46 | 47 |
| Insole-length Aluminium Toecap | 231 | 239 | 248 | 256 | 265 | 273 | 281 | 290 | 298 | 307 | 315 | 324 |
| Insole-length Composite Toecap | 233 | 241 | 249 | 257 | 265 | 273 | 281 | 289 | 297 | 305 | 313 | 321 |

**Iron
Steel**[®]
SCANDINAVIA



Ironsteel Scandinavia AS

Org. no. NO-924 487 437

www.ironsteel.no
post@ironsteel.no

www.ironsteelscandinavia.com
post@ironsteelscandinavia.com